

臺灣桃園國際機場
TAIPEI/TAIWAN TAOYUAN INTL AD

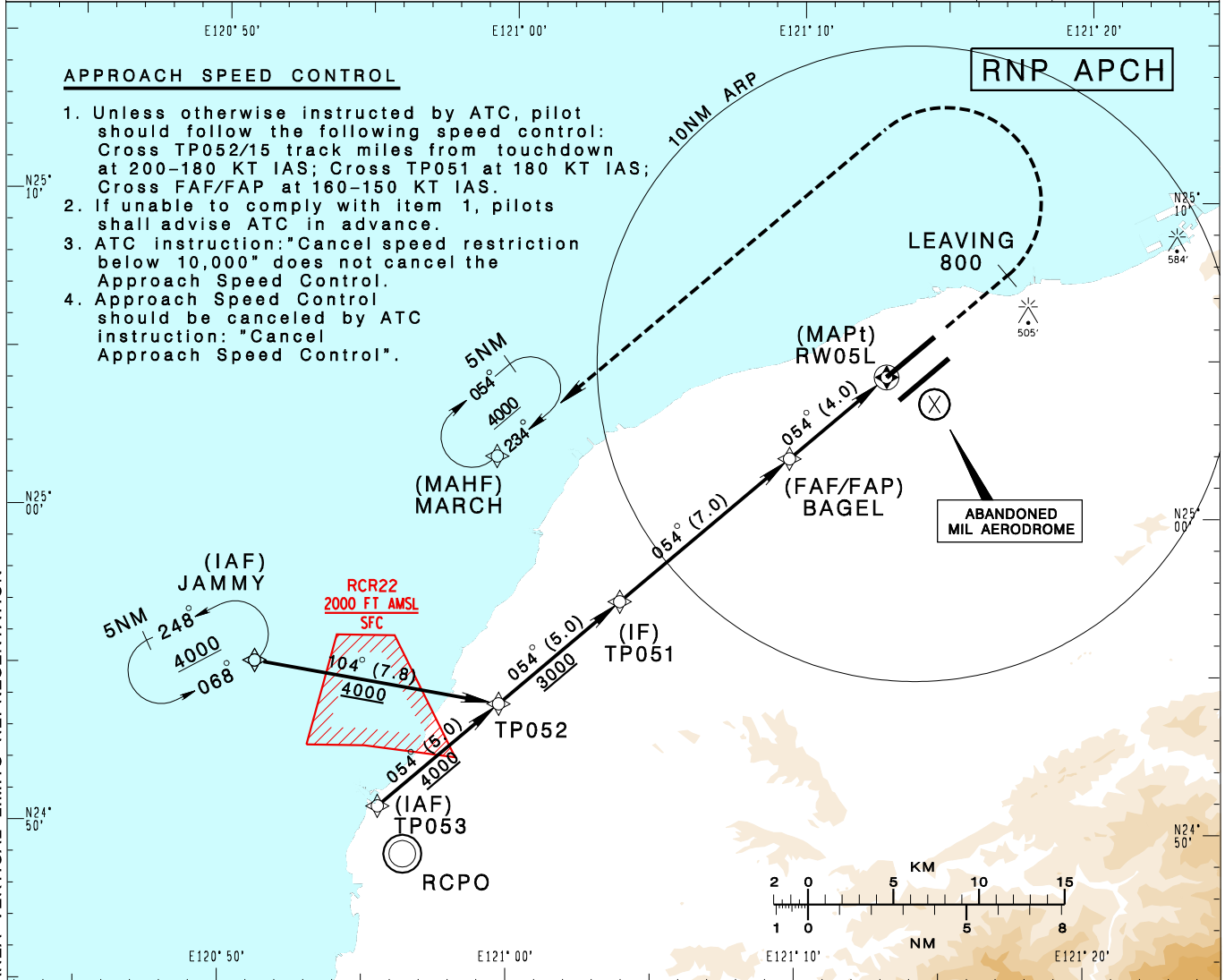
RCTP
RNP RWY05L

| | | | |
|--|---------------------------|--------------------|--------------------------|
| TAIPEI APP 125.1 128.5 125.6 | TAIPEI TWR 118.7 129.3 | ATIS 127.6 | VAR 5° W MSA ARP 25NM |
| Apt Elev: 108' | Rwy05L THR Elev: 74' | Trans Level: FL130 | |
| BEARINGS ARE MAGNETIC; DISTANCES ARE NAUTICAL MILES; ELEVATIONS, HEIGHTS IN FEET | | | |

APPROACH SPEED CONTROL

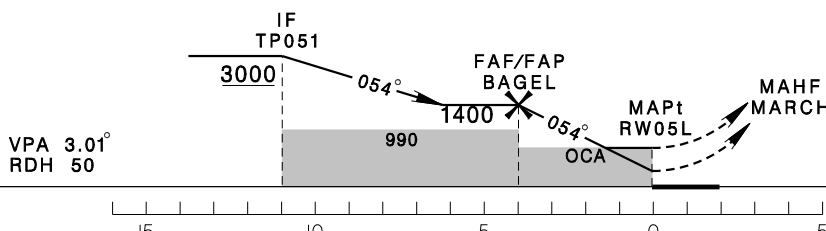
1. Unless otherwise instructed by ATC, pilot should follow the following speed control: Cross TP052/15 track miles from touchdown at 200-180 KT IAS; Cross TP051 at 180 KT IAS; Cross FAF/FAP at 160-150 KT IAS.
2. If unable to comply with item 1, pilots shall advise ATC in advance.
3. ATC instruction: "Cancel speed restriction below 10,000" does not cancel the Approach Speed Control.
4. Approach Speed Control should be canceled by ATC instruction: "Cancel Approach Speed Control".

CHANGES: NEW PAGE NUMBER, UPDATE RESTRICTED AREA VERTICAL LIMITS REPRESENTATION



| | | | |
|------|------|-----|----------------|
| 4NM | 3NM | 2NM | DIST to THR05L |
| 1400 | 1081 | 762 | ADVISORY ALT |

MISSED APCH:
CLIMB ON RWY HEADING UNTIL LEAVING 800, THEN TURN LEFT DIRECT TO MARCH, MAINTAIN 4000 AND HOLD.
*NO TURN PRIOR TO MAPt.



MINIMA (OCA IN FT, VIS IN M, OCH IN FT)

| CATEGORY | | A | B | C | D |
|-----------|-----------------------|--|--|--|--|
| LNAV/VNAV | STRAIGHT IN | 550 ¹⁵⁰⁰ _{RVR1500} 476 | 550 ¹⁵⁰⁰ _{RVR1500} 476 | 550 ¹⁵⁰⁰ _{RVR1500} 476 | 550 ¹⁵⁰⁰ _{RVR1500} 476 |
| | STRAIGHT IN (ALS OUT) | 550/2200 476 | 550/2200 476 | 550/2200 476 | 550/2200 476 |
| LNAV | STRAIGHT IN | 550 ¹⁵⁰⁰ _{RVR1500} 476 | 550/1600 476 | 550/1600 476 | 550/1600 476 |
| | STRAIGHT IN (ALS OUT) | 550/2200 476 | 550/2200 476 | 550/2200 476 | 550/2200 476 |

- NOTE**
1. CIRCLING NOT AUTHORIZED.
 2. MAX IAS AT JAMMY/TP053 210 KTS.
 3. BARO-VNAV NOT AUTHORIZED BELOW 0° C.
 4. DME/DME NOT AUTHORIZED.